

# KICK START

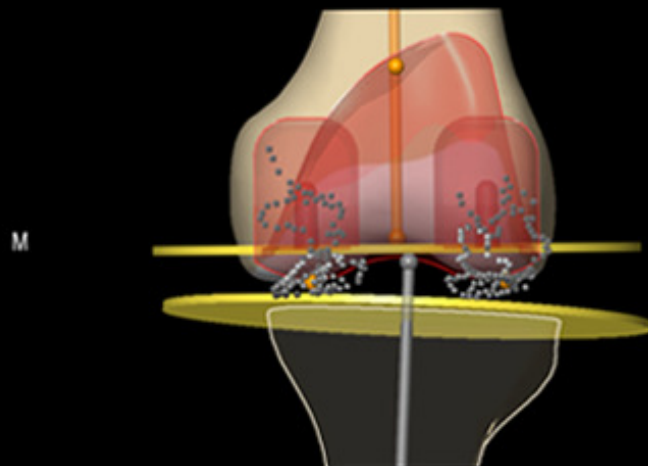
## EFFICIENT, MOBILE CAS

- 21.5" full HD drapable touch display
- Intuitive Brainlab control concept
- Optical tracking with laser guidance
- Compact and portable system
- Expandable with Brainlab Buzz



# Femoral Planning 2 of 2

NO NAME  
EN03C



Epicondylar  
5.5° int

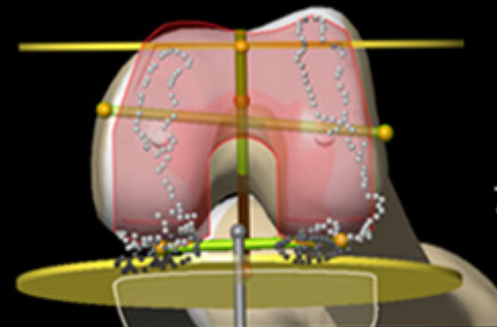
Whiteside  
0.0° int

Posterior  
1.5° ext

L M

8.5 mm

7.0 mm



Varus  
0.0°  
Verified Tibial  
Valgus 0.5°

Rotation to Tibia  
0.0° int  
Flex. Gap 12.0 mm

Reset Plan

Extension gap too small for thinnest tibia insert.

Femur Size 3  
Tibia Size 3+  
Insert Thickness 10 (10.0 mm)

21.5" full HD drapable touch display provides excellent image quality

BRAINLAB Menu Options Screenshot

Back

Next

BRAINLAB



NDI Polaris Spectra Camera equipped with a position laser offers 300 cm pyramid tracking volume



All components fit into customized cases for easy and flexible transportation, even by air.



Separate telescopic camera stand for set up flexibility and undistorted line of sight

# KICK UP

## SMART CONNECTIONS

- Patient-centric data handling for optimized system operation
- Brainlab installed Patient Data Manager software for intuitive usability
- Easy upload and storage of patient data
- High speed network ports for access to PACS and network based devices
- Quick integration of surgical devices





Central home button and drag & drop display for content management and intuitive system control



Interface connection panel for rapid third-party device integration



# KICK OFF

## DATA CONTROL ARENA

- Expand with Buzz
- Stream and record
- Integrate OR functionalities
- Plan Orthopedic cases on Buzz

